

Where do I start?

You will need to decide what type of whare you'd like to build:

- Option 1: He wharenui

Create a replica, a model of your own wharenui or a wharenui you feel connected to.

- Option 2: Tō whare

Create a replica of your own whare, or a whānau home i.e. Nan's whare

- Option 3: He whare hou

Create & design your own whare. Be creative i.e. swimming pool, spa pool movie room. Its your ideal whare...kei a koutou the tikanga!



Paearu: Criteria

- Floor plan / Layout - This must include ALL measurements

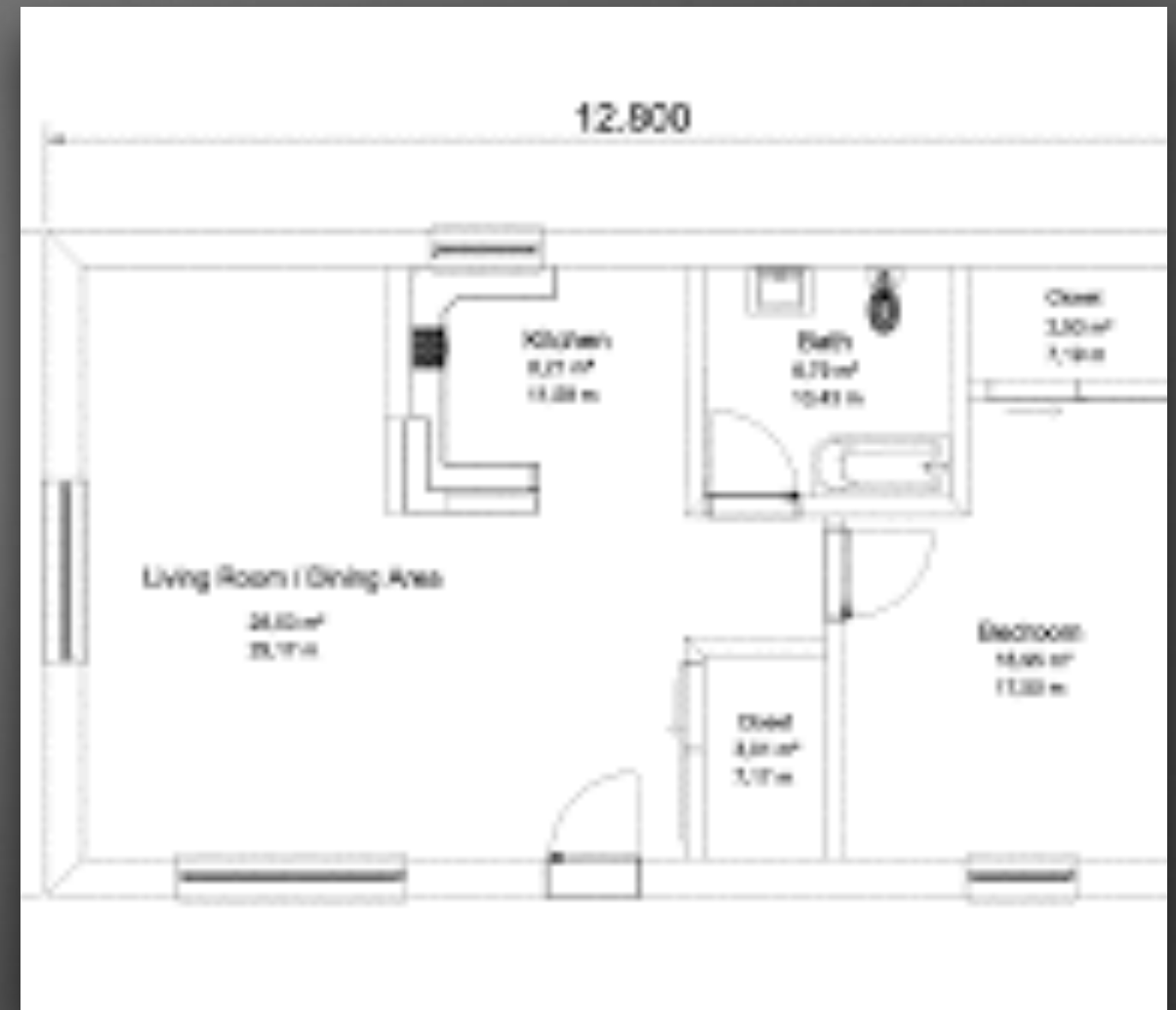
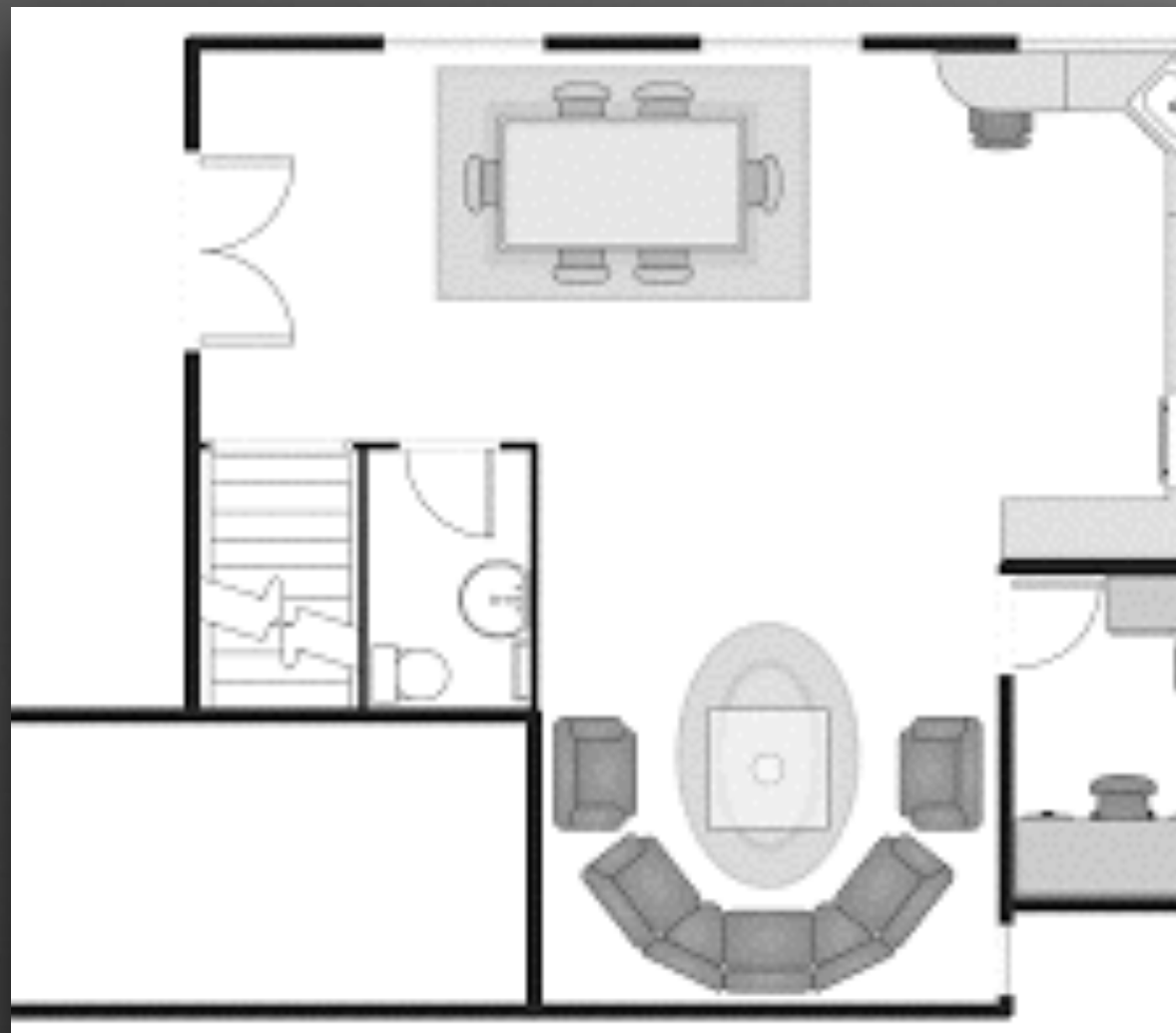
i.e length, height, width, perimeter, area (whole whare & all rooms)

DUE: Next Weds 12th

- Whare & floor plan need to be well thought through, created with pride & effort
- Need access inside the whare i.e. roof can be taken off

Hei tauira: Examples

Designs, floor plans



Hei tauira: Examples

Ngā momo whare

Wharenui





Cardboard



Popsicle Sticks



Wood



Lego / Blocks



**Hmm, what other
resources could we
use?**

**Remember to reduce,
reuse & recycle
#Papatūānuku**

- Popsicle sticks, toothpicks, skewers
- Clay/Uku, play dough
- Ply wood, rākau, rocks
- Cardboard, paper,
- Old boxes, containers, bottles, cans

**Interior: Old recycled carpet, flooring,
paint, wood etc**





Āe, he wero nui....hikina the manuka!

Yes, a big challenge e how mā but take it on with a smile and have fun creating!